



Cree Hunters and Trappers  
Income Security Board

**Changing the Cree  
Hunters and Trappers  
Income Security Program**

*August 2018*





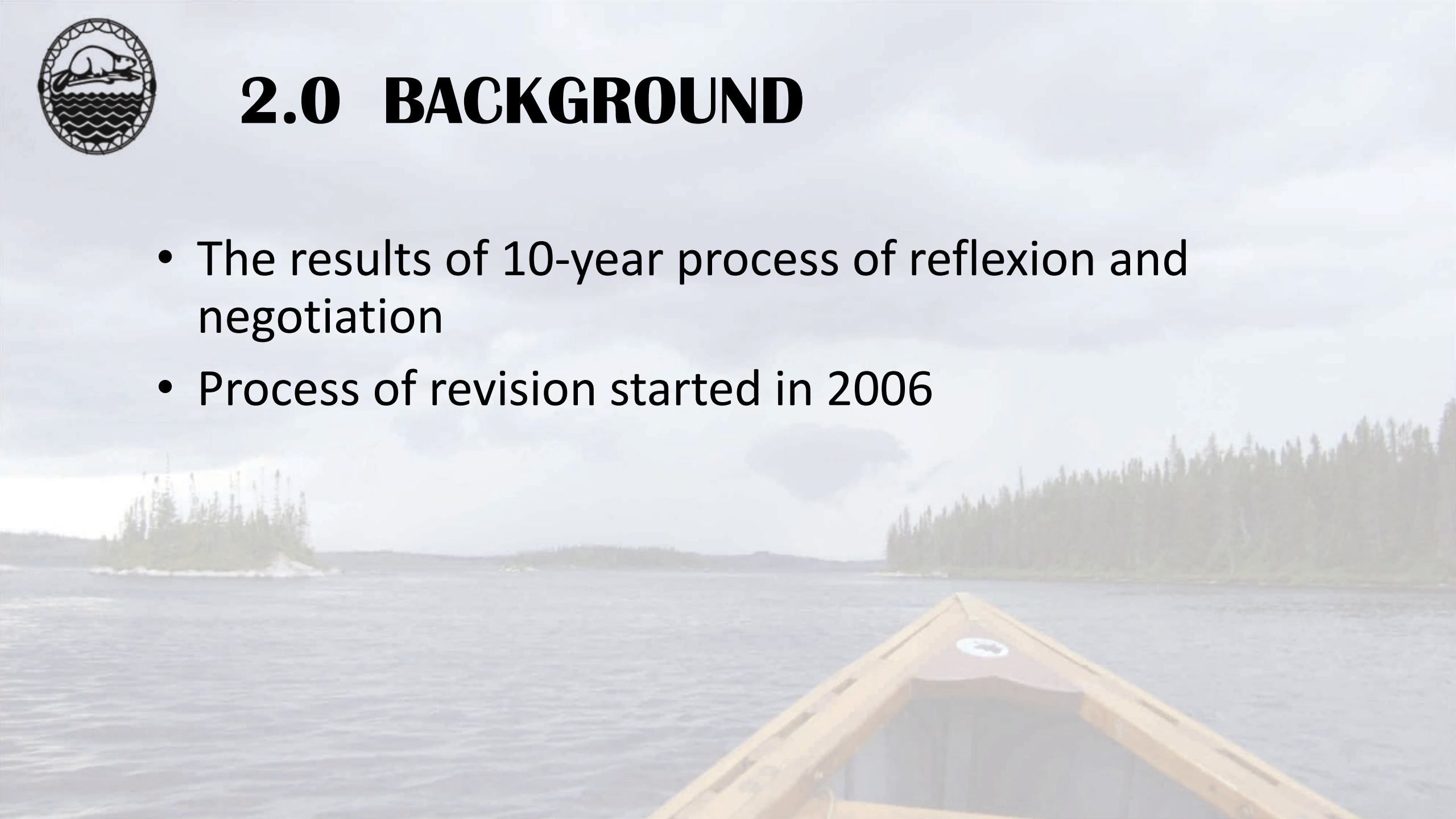
# 1.0 INTRODUCTION

- Willie Iserhoff, Negotiator
- Philip Awashish, Negotiator
- Serge Larivière, Director General



## 2.0 BACKGROUND

- The results of 10-year process of reflexion and negotiation
- Process of revision started in 2006





## 3.0 MISSION OF ISP

The mission of ISP is

“...to provide an income guarantee and benefits and other incentives for Cree people who wish to pursue harvesting activities as a way of life is established by and in accordance with this Section.”

Article 30. also says

“The program shall ensure that hunting, fishing and trapping shall constitute a viable way of life for the Cree people, and that individual Crees who elect to pursue such way of life shall be guaranteed a measure of economic security consistent with conditions prevailing from time to time.”



## 4.0 PAST REVISIONS OF ISP

- Created in 1975
- First revision in 1988 (Complementary Agreement 8)
  - Maternity Leave
- Second revision in 2002 (Complementary Agreement 15)
  - Far Harvesting
  - Semi-active status
  - Insurance Fund (Disasters, sick days)
  - New demand without qualification for graduates





## **5.0 THIS REVISION OF ISP**

- Process initiated in 2006
- Community consultations in 2008-2009
- Internal analyses and community interviews 2010-2011
- ISP Recommendations submitted to in 2012
- Negotiations from Dec 2013 to May 2018



# **The new Program will have a new name!**

- Cree Hunters and Trappers Income Security Program
- New Name: “IIYIYIU INTUUHUUSIU SHUUYAAN”
- Economic Security Program for Cree Hunters
- (emphasis on economic security)



## **6.0 PROPOSED CHANGES**

- 6.1- Providing equal access to women and men
- 6.2- Improving the program for elders
- 6.3- Easier access to the Program
- 6.4- Focus on economic security
- 6.5- Improving Economic security
- 6.6- Extend Far Harvesting allowance
- 6.7- Greater community involvement
- 6.8- Special consideration for Whapmagoostui
- 6.9- Increase youth participation
- 6.10- Easier administration process





## 6.1 Providing equal access to women and men

- “Head of family” almost always a man
- Some cases cause discrimination against women
- Head of the family redefined as
- “.. The person recognized as the most active in the pursuit of traditional activities”
- Result: equal access to men and women



## 6.2 Improving the Program for elders

- Semi-active status offers elders a special measure to remain on the program
- Before? 5-year limit
- Now: Lifetime eligibility once they qualify



## 6.3 Easier access to the Program

- Before? One full year of qualification and NO payments
- Removal of Qualifying year
- New Demands and reinstatements limited at 120 days





## **6.3 Focus on economic security**

### **A) – Limit on other income**

- Before – no limit on family income
- Some families already have “economic security”
- ISP for families who depend solely on the benefits of the Program
- Allowable income of \$35,000 per adult and \$2,000 per child
- Over that, ISP benefits reduced dollar for dollar



## **6.4 Focus on economic security**

### **B) – Near trappers**

- Trappers that harvest «close to the community » (within 50 km) do not need as much economic security as others
- Also, their activities more difficult to monitor
- Finally, more short day trips
- The maximum numbers of days will be limited at 160 for each adult in this situation
- Money saved here used to increase daily rate



## **6.5 Improving economic security**

### **Increased daily allowance**

- Money saved from “Near Trappers” measure is estimated at \$1,6 million annually
- This money used to increase daily amount for all beneficiaries
- Proposed increase of 9,6%
- From \$68,89 (2018-2019) to \$75,50 in 2019-2020
- Pay more money to the people that really need economic security





## 6.6 Far Harvesting Allowance

- CURRENTLY
  - Far regions payable 6 months
  - (November to April)
  - Maximum of 180 days
- PROPOSITION
  - Far regions payable 12 months
  - All months eligible
  - Maximum of 180 days remains
- Far region allowance gives an additional 30% of the daily amount
- Far is defined >200 km by road
  - Or > 50 km if no road access



## 6.7 Greater community involvement

- Before? Local committee list of “hunters”
- List often failed to differentiate between hunters and those who rely on hunting as their lifestyle
- Local committee will serve as “advisory” board
- List compiled by ISP then submitted to Local Committee for advice and comments
- Greater local implication
- Greater decisional power



## **6.8 Special consideration for Whapmagoostui**

- Entire Whapmagoostui area considered as eligible for the « far region provision»
- Each day granted 30% additional amount for a maximum of 180 days
- Approx. \$90 per day instead of \$70





## 6.9 Increase youth participation

### New Incentive Provisions for youth

- 30 days payable for adults who take teenagers in the bush (at 40% of the daily rate + Far Harvesting allowance if applicable)
- Approx \$50 per teen per day
- Maximum of two teens per family unit
- Outside of school calendars
- Great way to encourage and promote youth participation!!



## **6.10 Easier administration**

- Program will be structure and based on monthly Payments and direct deposit
- Insurance funds for sick days and disasters abolished
  - Measures will remain – but administered differently
  - No more deductions from ISP benefits
  - Existing funds returned to beneficiaries
  - Leftover money (\$400,000) used for activities to promote the lifestyle and traditional activities



## 7.0 CONCLUSION

- The new program will be refocused on providing « economic security »
- Adapts the Program to modern times
- Increases community involvement
- A better program for all beneficiaries!





**Meegwetch!**

